

Figure 13. Stream erosion points within 50 and 100 feet of a critical area
Six Mile Creek Watershed, Tompkins County, NY

Number of stream erosion points versus distance from critical areas.

Total points:		55
Distance	# of Points	Pct. Total
0	10	18.2%
50	15	27.3
100	25	45.5
200	32	58.2
300	36	65.5
400	42	76.4
500	49	89.1
600	49	89.1
700	49	89.1
800	51	92.7
900	52	94.5
1000	52	94.5
1100	55	100.0

Legend

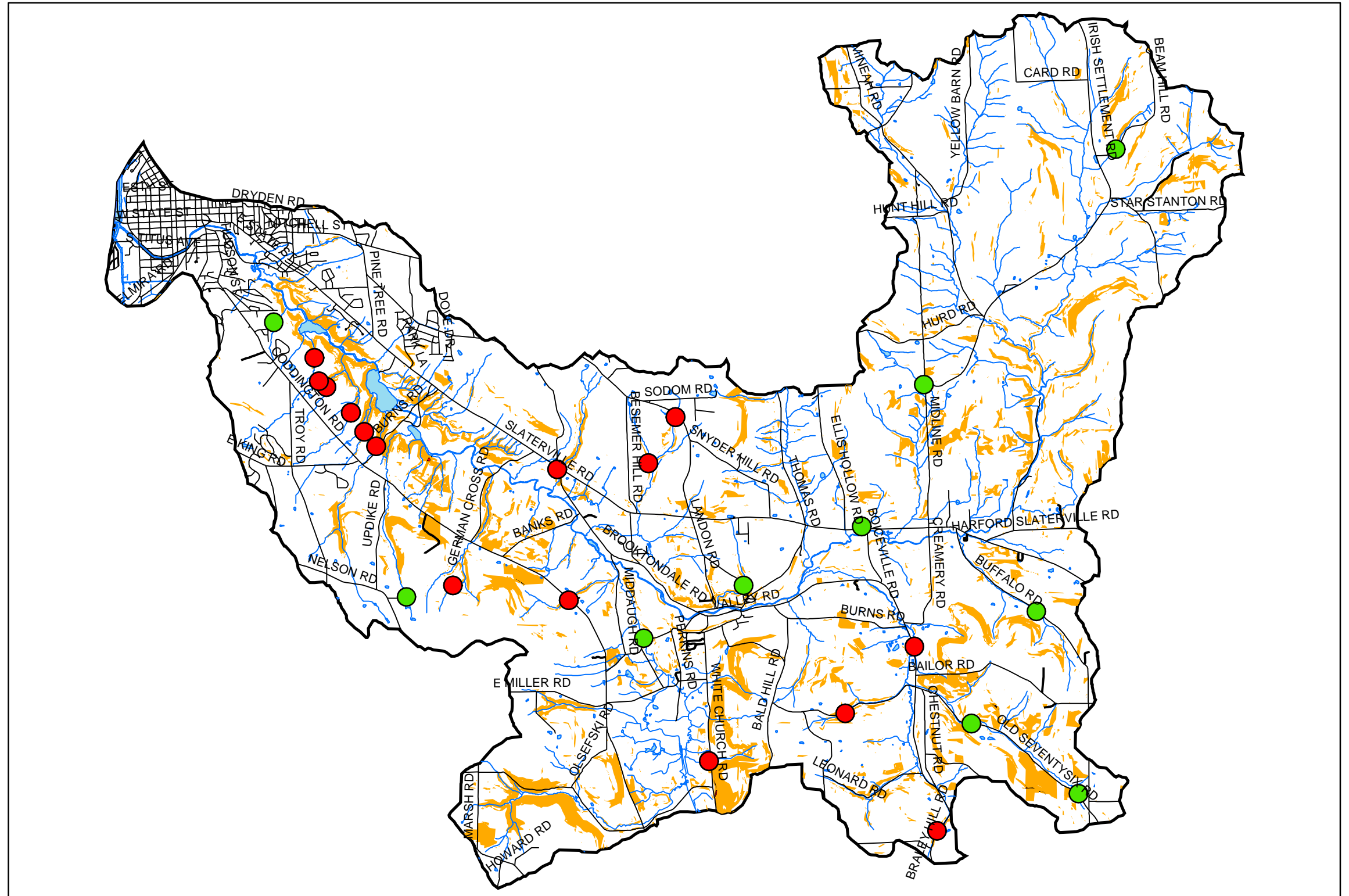
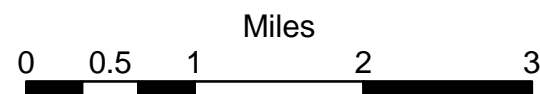
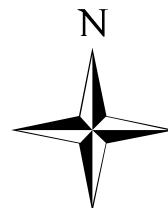
- Stream eros. within 50' of CA
- Stream eros. within 100' of CA

Erosion Risk

- High
- Very High
- Streams
- Water

Roads

- Main Roads
- Secondary Roads
- Watershed Boundary



Metadata
 Projection: State Plane NAD83, NY Central
 Map Units: Feet
 Created by: Tom Owiyo, Brian Duffany and Karen Edelstein. 13 November 2002. Geddes Laboratory, Cornell University.