

Figure 14. Ditch erosion points within 50 and 100 feet of a critical area
Six Mile Creek Watershed, Tompkins County, NY

Legend

- ▲ Ditch eros. within 50' of CA
- ▲ Ditch eros. within 100' of CA

Critical Areas - Erosion Risk

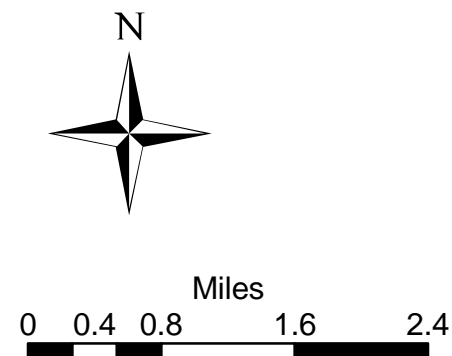
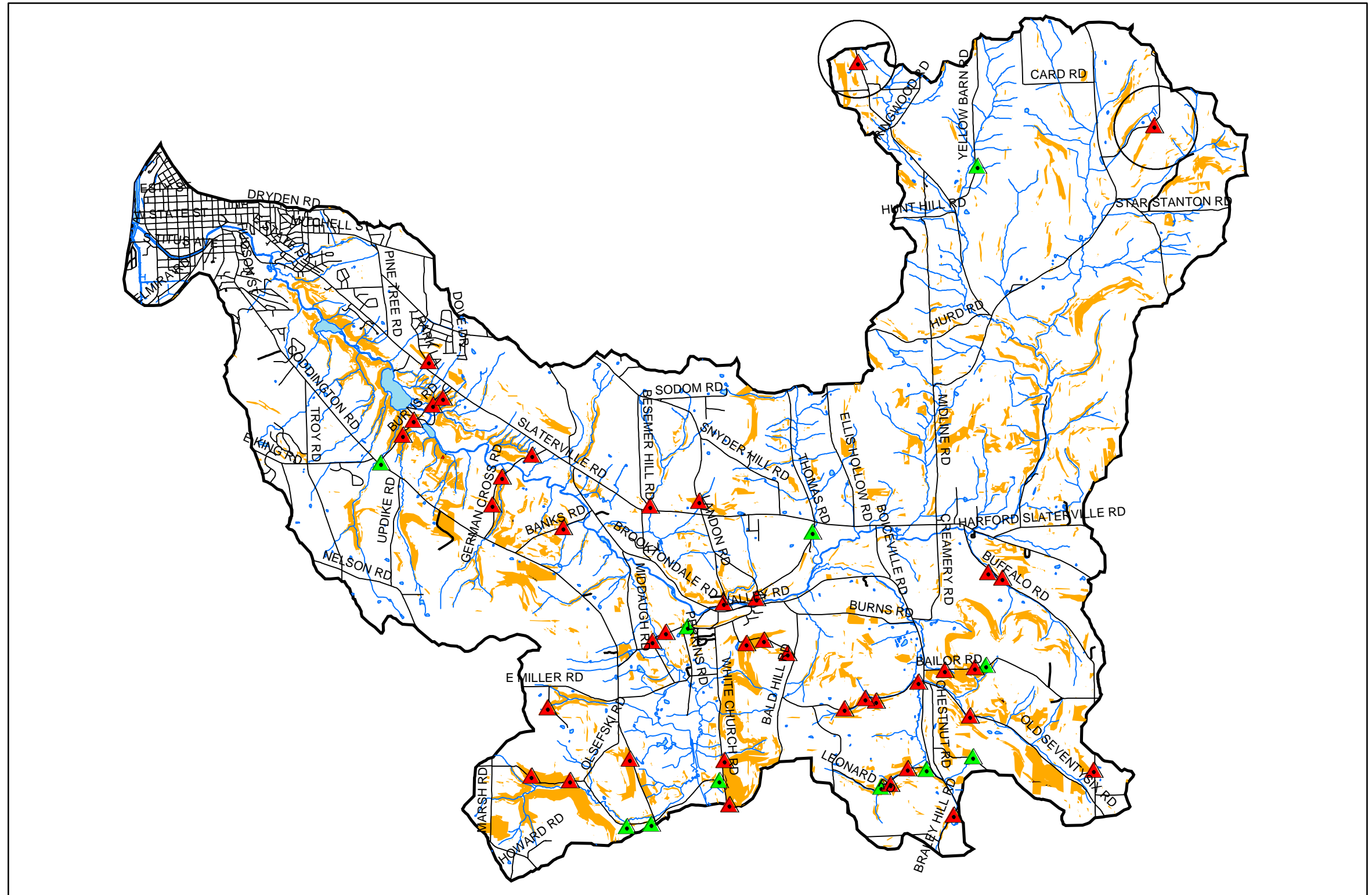
- High
- Very High

Streams

- Streams
- Water

Roads

- Main Roads
- Secondary Roads
- Watershed Boundary



Metadata
 Projection: State Plane NAD83, NY Central
 Map Units: Feet
 Created by: Tom Owiyo, Brian Duffany and Karen Edelstein. 13 November 2002. Geddes Laboratory, Cornell University.